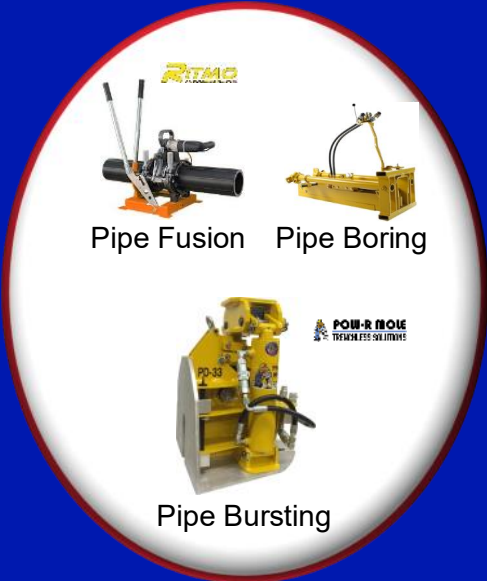


2024 RJM Water & Sewer Catalog



Sewerin AC200 Water Leak Correlators / Leak Detector Correlator + Leak Detector + Plastic Pipe Locator + Leak Survey

- ◆ **Replays & displays last 7 listening points** for comparison of leak sounds without delay between listening points
- ◆ Peak suppression easily finds multiple leaks per pipe
- ◆ Easy sound velocity measurement & calibration
- ◆ **Submersible** controller & microphones
- ◆ **All wireless** leak detector: microphones, headphones and test rod
- ◆ Automatically scans frequencies and sets precision background noise filters
- ◆ **5.7" color touch screen** with easy controls
- ◆ Hydrophones correlate better on hydrants with non-metallic pipes
- ◆ Extreme sound blocker limiter with 5 level settings
- ◆ **Thumb sensing mute switch with no moving parts**
- ◆ One connection outside the case charges everything at once
- ◆ WaterCom software free
- ◆ Sewerin's best leak detector from the world's leading manufacturer
- ◆ Two year warranty
- ◆ **GPS** transmitters and receiver to track leaks and survey locations
- ◆ **LED** on microphones to light valve boxes
- ◆ Correlation quality indication
- ◆ Easy intuitive color touch screen operation
- ◆ Free training included



Sewerin A150 Water Leak Detector

- ◆ Sewerin's best A200 microphones, **wireless** headphones, case
- ◆ Automatically scans & sets background noise filters
- ◆ Precise background noise filters: 6 lower, 6 upper
- ◆ Background power noise filter
- ◆ 16 hour rechargeable Li-ion battery
- ◆ 3 level extreme sound blocking
- ◆ Displays current and previous two sound levels
- ◆ Powers on automatically when mic is connected
- ◆ Locates leaks and non-metallic pipes
- ◆ Lighted microphone for valve boxes
- ◆ Free training included



Sewerin A50 Water Leak Detector

- ◆ **Wireless** or wired headphones
- ◆ Background noise filters, 6 lower & 6 upper
- ◆ Wind protected microphones
- ◆ Weatherproof, rechargeable batteries
- ◆ Displays current & last 2 sound levels
- ◆ Extreme sound protection with 3 levels



Sewerin T10 Water Leak Detector

- ◆ Thumb sensor listen switch eliminates switch wear
- ◆ **Wireless** or wired headphones
- ◆ 8 background noise filters
- ◆ Extreme sound blocking
- ◆ Wind / background noise shields
- ◆ Quick set up
- ◆ Wireless & durable



Sewerin Stethophon Leak Detector

- ◆ **Wireless** or wired headphones
- ◆ Displays current & **previous** readings
- ◆ **8 or 5 filter ranges**, max noise limiter
- ◆ Simple operation
- ◆ 4' test rod
- ◆ Internal and external microphones
- ◆ Value priced
- ◆ Compact and light weight



Sewerin Water Leak Loggers

- ◆ **Highest sensitivity loggers detect from 1600 feet**
- ◆ **Lowest labor and equipment cost** to survey water systems
- ◆ Listens while your sleeping with minimum background noises
- ◆ Easy data collection with dedicated master logger



Metal Detectors



Quantum and GPROver GPR

- The **only three frequency GPR!**
- Scans **deeper** and **greater detail.**
- The **widest frequency range** of any GPR! (163.5-1751 MHz)
- **View and record 1, 2 or 3 real-time simultaneous frequencies: 250 MHz, 500 MHz, 1000 MHz using three antennas.**

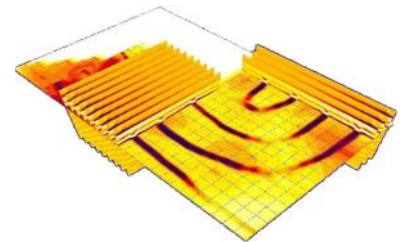


GPROver GPR Additional Features

- Simple worldwide utility mapping with **2-inch accuracy** without cellar modems, base stations, ...

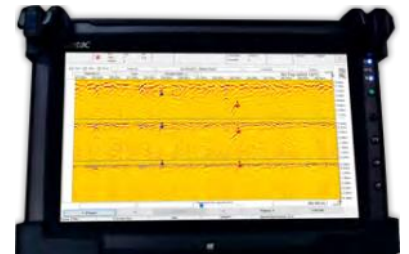
US Radar GPR

- The only **GPR made in USA**
- **Experience since 2002**
- **2-year warranty**
- Auto soil calibration
- SmartStack, SmartGain2, StreetSmart improve image quality & depth
- Quick folding handle
- 16-inch rough terrain wheels
- 16-hour dual batteries



Software

- 3D image and modeling
- Overlay radar data onto satellite maps
- Create As-Built in the field or office and export to AutoCAD, Google Earth
- Automatic report generation creates print ready exports for screen shots, slice images, survey points, videos, maps, point cloud, reports, ...
- Mark, measure and label data points with utility colors
- Pass feature displays scans side by side for easy comparison



Q Series & 100S

- Single frequency: 100, 250, 500, 1000 Mhz. Maximum depth 5 –100 feet
- Low cost and simple

Sewerin Plastic and Metal Pipe Locators

- Create water pulses or tapping sounds to locate any water pipe. Follow the sounds with Sewerin or other water leak detectors.
- The **FG155C** controls the Stopper and Striker and transmits radio frequencies up to **10 watts** and **120V** for deeper and longer locates with Sewerin and other radio frequency locators.



Pipe Hound - Water Pipe Locators

Locate all water pipes by connecting to the water system to track the pulsing sound with a **Sewerin** or other water leak detector.

- No errors or confusion from other utilities.
- Electronically controlled for consistent, easy and safe water pipe locating.
- Powered by quick change rechargeable 18V/20V lithium ion batteries.



Sewerin UT9100 & UT9200 Utility Locator

- **1/2 mile automatic remote control of transmitter**
- Easy frequency selection: 100 choices UT9200, 30 choices UT9100
- Dual output locates multiple utilities without reconnecting
- Locate position and depth under obstacles
- Signal identification with current direction and strength
- **Auto frequency noise scan**
- Easier sonde and camera locating

UT9200 Additional Features:

- **Accurately map** (including depth) and locate with Bluetooth connection to GPS receivers devices
- Easily select the best frequency for your needs from **100 frequency choices**
- Cable fault locating
- Removeable **marker antenna** for lighter weight when not needed and no need to purchase another locator

Sewerin UT Series Locators

- Made in **USA**
- Locator withstands water jets
- Weather resistant case
- Easy set up app to select your favorite frequencies and features
- Easy to follow tones change in pitch and volume

Sewerin UT930 Pipe Locator

- Automatic gain
- 7 active frequencies, power, radio
- Automatic depth measurement
- Low price

Transmitters

- **Automatic 1/2 mile remote** control with the 5 watt or 12 watt models
- **12 watts of power**



CHC Navigation GPS Tablet

- **Combined accurate GPS receiver and field sturdy tablet** to keep a hand free to paint as you locate and map with one hand
- Integrates with **Sewerin and Radiodetection locators**
- Accurate **2 cm accuracy** with RTK correction.
- **Low cost**



Radiodetection RD8200SG Survey Grade GPS Locator

⊙ **1 cm accuracy with built-in GPS antenna**

- ⊙ Accurate map and locate together with one hand
- ⊙ Compatible with Pointman, SubsurfaceMaps, RD Map (soon) utility mapping apps



Radiodetection RD8200SG & RD8200 Locator: All RD7200 features plus:

- ⊙ Remotely control transmitter from 1400 feet.
- ⊙ Accurately map/locate GPS using free "RD Map" and external GPS or internal GPS
- ⊙ 18 active frequencies, 4 sonde frequencies, 5 passive frequencies
- ⊙ Simultaneous power and radio signal detection
- ⊙ Identify the same signal with current direction



Radiodetection RD7200 and R8200 Features:

- ⊙ Speaker faces up to hear better in noisy areas and with louder and higher frequencies.
- ⊙ Swing warning tone, vibration and tone prevents swing errors
- ⊙ Guidance Mode: Intelligently combines 5 signals for the easiest, fastest, farthest locates
- ⊙ Precision Antennas: Ferrite core antennas **diamond ground to 0.02"**, aligned to 0.
- ⊙ Withstands water jets and one meter drop to concrete, IP65
- ⊙ **High Sensitivity Power Frequencies**: Detects 16 power frequencies at once for extreme sensitivity
- ⊙ Verify Accuracy: Compare the peak and true null antennas to determine accuracy without assuming
- ⊙ CPS frequency: Locates cathodically protected water and gas pipes
- ⊙ Live power cable warning
- ⊙ 3 Year Warranty
- ⊙ **Peak Mode + Guidance Arrows**: Combines the two most accurate signals in an easy to follow display
- ⊙ Displays Utility Direction
- ⊙ **Free On-site training**
- ⊙ Balanced
- ⊙ **Automatically** displays signal strength to identify the utility
- ⊙ Prevents display of depth when not above the utility to prevent errors
- ⊙ Cable Fault Location
- ⊙ **90 volt output** for faster, longer, deeper locates with fewer connections



Hathorn H12+

- **12.1" VividHD™ HD LCD twice as bright** as the leading brand
- Quick change 18V Milwaukee style battery port
- **Digital zoom & pan**
- **1-touch recording on 128Gb or 512 Gb SSD and / or USB**
- Record screen captures
- Distance counter
- 512 hz sonde locates to 15 feet
- Titles with full size weather proof keyboard
- Easy operation
- Adjustable camera brightness & auto exposure
- Voice recording
- Cool running camera LED's for long life and bright enough for up to 12" pipes
- Camera diameters: 1", 1.23", 1.43", 1.68" for 1 1/2" to 12" pipes
- Compact controller (15"x12"x5.5) and lightweight (9.5 lbs.)
- Made in **North America**
- 5 reel sizes with 100', 200', 300', 400', **500'** lengths
- 1/4", 3/8", 0.4", 1/2", **5/8"** diameter pushrods
- Highest quality



Hathorn Wi-Fi Reels

- Use your mobile device and **save money**
- **More portable mobile devices**
- Free Android & IOS Apps display and record video and photos
- Precision laser distance counter
- Large, Mid-size, Mini, Micro reels
- Quick change 18V Milwaukee style battery port



Hathorn H7

- **7" VividHD™ HD LCD twice as bright** as the leading brand
- Quick change Milwaukee M18 style battery powered
- **1-touch USB and 64 Gb or 128Gb SSD records** video and photos
- Cordless
- Counter
- 512 hz sonde to 15' depth
- 3/8" or 0.4" or 1.2" x 200'
- 1", 1.23", 1.43", 1.68" rugged self leveling cameras
- Auto brightness camera
- Wi-Fi for file transfer (optional)
- Cool running camera lights for long life
- Sapphire camera lens
- Resists dust and water splashes, IP64
- Made in North America



Camera Skids

- Centers for better view
- Pushes farther
- Protects cameras
- Slide through bends



Riezler Pan & Tilt Mainline Cameras

- Rugged pipe inspection system for 4" - 80" pipes
- Cameras: rear view, 10x optical zoom, auto/manual focus, auto level
- Modular system with 4 cameras, 2 tractors, 6 wheel choices, **6 or 8 wheel drive**, powered or manual elevators, 4 reels, 1000 feet
- Measure **inclination, dimensions**, depth, distance, position, pressure
- German engineering and quality with USA support / service



Odor Control Biofilters

- Lowest overall cost
- 6 - 8 year media life
- No chemical use costs
- No carbon replacements costs
- **All natural & regenerating**
- Low maintenance
- No corrosion with all HDPE & stainless steel



Wastewater Plants Vents Manholes Lift Station

Jameson Locatable Rodders

- Drill **powered feeder** for easy fast in and out
- Locate conduits, storm, sewer, live water mains, water services
- Point locate with sondes or locate entire length of the pushrod
- Jameson **made in USA** quality since **1954**
- **Locatable rodders:** 1/8", 3/16", 5/16", 7/16" **up to 1500'**
- **Rodders:** 1/4", 3/8", 1/2" up to 1000 feet



PowrMole Directional Boring & Pipe Bursting

- **Made in USA, 5 year warranty, 50 years experience**
- Trenchless pipe boring & bursting 1/2"-12" pipes
- Powered by most excavators or Honda power pack
- Accurately track and steer
- Uses rods and / or cable
- Simple, durable & low cost
- Up to 9 feet per minute



HDPE Pipe Fusion Machines

- 15 Models for **1" to 63" Pipes**
- Electro-fusion machines, socket fusion, scrapers, bevelers, pipe cutters, hot plates, pipe alignment clamps, internal pipe de-beaders, extrusion HDPE welders



Thank you for viewing our catalog. Since 2002 RJM Equipment Sales, Inc. provides the best service, support, sales and training for happy customers. Contact us now to learn more.



RJM Equipment Sales, Inc

800-620-4773, 360-828-5732
 9808 NE 134th Ave, Vancouver, WA 98682
 Sales Manager: **Brian Moss**
 brianmoss@rjmcompany.com

